



ADAPTATION FUND

SCALING UP AND REPLICABILITY OF ADAPTATION FUND PROJECTS TO INCREASE CLIMATE RESILIENCE

Martina Dorigo – Climate Change Specialist – RBM unit

24 October 2023

RedLAC Congress - Cusco, Peru

Adaptation Fund at a Glance



Mandate to fund **concrete adaptation projects with tangible results on the ground**, in most climate-vulnerable developing countries & communities



Pioneer & leader on innovative 'Direct Access' & 'Enhanced Direct Access' modalities



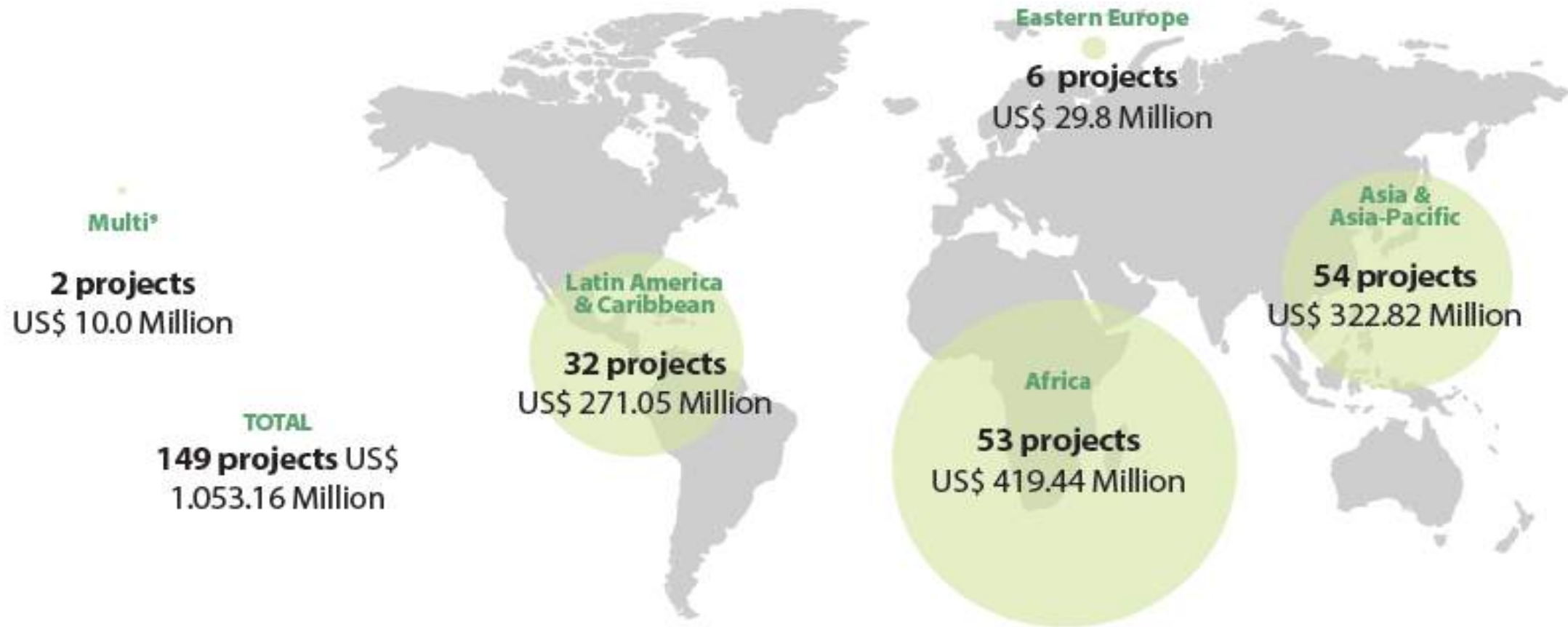
As urgency of climate change has risen, it has grown rapidly to almost **\$1B funding today**



ADAPTATION FUND



Regional investments for a diversified portfolio



Mandate – Mission – Strategic Priorities

MANDATE

Finance concrete adaptation projects and programmes that are country driven and based on the needs, views and priorities of developing country Parties that are particularly vulnerable to the adverse effects of climate change in meeting the cost of adaptation

MISSION

The Adaptation Fund serves the Paris Agreement by accelerating effective adaptation action and efficient access to finance, including through direct access, to respond to the urgent needs and priorities of developing countries. The Fund does so by supporting country-driven adaptation projects and programmes, innovation, and learning with concrete results at the local level that can be scaled up.



What is available for eligible Parties



Concrete adaptation activities in the most vulnerable communities

visible and tangible impacts at the local level that can be scaled up



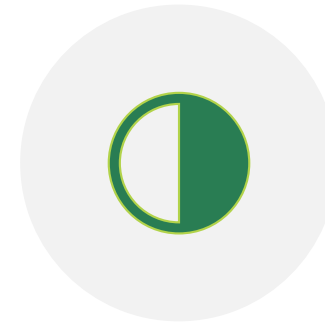
No prescribed sectors or approaches

country-driven process that accommodates countries' priorities and adaptation reasoning



Finance the full cost of adaptation

No co-financing requirements



50% of portfolio for Direct Access

Total allocation for projects/ programmes submitted by MIEs cannot exceed 50% of resources



USD 20 million available per country & 2 NIEs per country

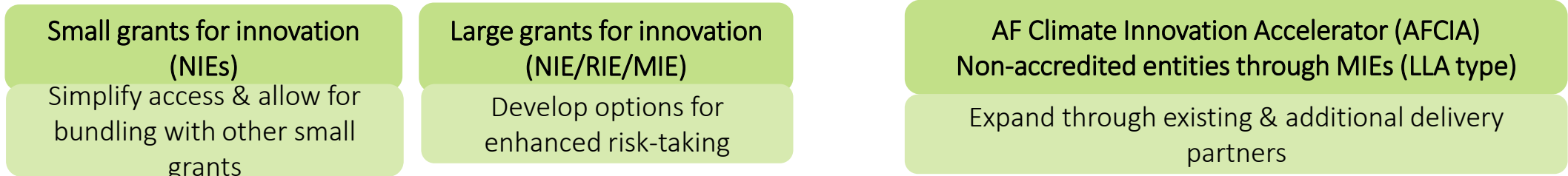
For single country projects, other grants available outside of country cap

MTS-2 IP Delivery Methods & Windows

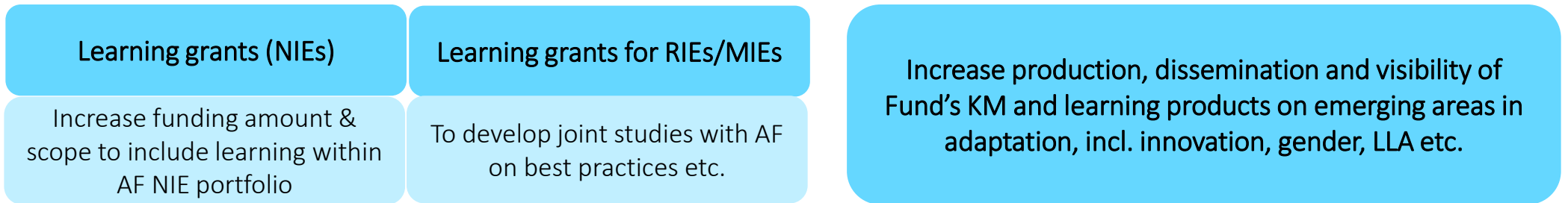
ACTION



INNOVATION



LEARNING & SHARING



ENHANCED READINESS PROGRAMME

Incl. Readiness Package Grants, TA Grants for ESP & GP, Project scale up grants

Accreditation with the AF

- ❑ Strengthens the **institutional capacities** of IEs by helping IEs consolidate internal fiduciary and financial management systems, project management, transparency and complaint handling mechanisms.
- ❑ Allows IEs to **submit funding proposals** to the AF.
- ❑ Makes it possible for IEs to **participate in AF learning and sharing activities** and be included in relevant AF communications.
- ❑ Accreditation to the AF increases IEs' **visibility** and allows for more opportunities to engage with the global climate finance community.
- ❑ Under the joint funds' road map, progress has been made on the **fast-track accreditation and reaccreditation** between AF and GCF entities.



Scale up and replicate projects – project design

- One of the AF's key niches is **piloting localized projects** that can later be replicated or scaled up with additional resources. AF projects are often the first adaptation projects on the ground and many of them have been scaled up or replicated, creating transformational change to help the most vulnerable people, adapt and build resilience to climate change.
- Projects need to describe how **sustainability** of project outcomes has been taken into account when designing the project. Adaptation benefits achieved should be sustained and should enable replication and scaling up.
- **All key areas of sustainability** should be addressed, including but not limited to economic, social, environmental, institutional, and financial.



Scale up and replicate projects – project implementation

- In the **annual project performance reports**, implementing entities have the possibility, in the mid-term and final report, to share what is the potential for the climate resilience measures undertaken by the project/programme to be replicated and scaled up both within and outside the project area.
- **Mid-term review** for projects with a duration of 4 + years, helps identifying successes and best practices as well as areas with potential for upscaling or replication.
- **Terminal evaluation** report should provide evaluative evidence covering the entire intervention. It should measure the overall impact, effectiveness, efficiency, sustainability, replicability, scale-up, and lessons learned of a Fund-financed project.
- Not all projects can or should be scaled. Some projects and interventions are appropriately relevant to local levels.

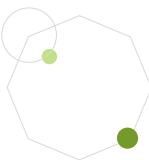


Scale up and replicate projects – instruments

- Accredited National Implementing Entities (NIEs) can access to **scale-up grants** for an amount of US\$ 100,000, to expand or replicate quality projects that are based on country needs, views and priorities. These grants support planning, assessment, capacity enhancement for designing and developing scaling up pathways for Adaptation Fund projects under implementation and nearing completion or completed. Implementation of project/programme scale-up would be funded by various sources, such as other climate funds but also from other finance channels (including private sector).
- Complementarity and coherence between climate funds: **scale-up framework between AF and GCF**. Projects that reached mid-term or completion and show scalability potential. Building on lessons learnt and experiences from the piloting of the AF-GCF scale-up framework, both funds have agreed to expand the approach to their entire portfolios.



ADAPTATION FUND





FONDO DE ADAPTACIÓN

Knowledge management tools for scaling up and replicability of projects to increase climate resilience

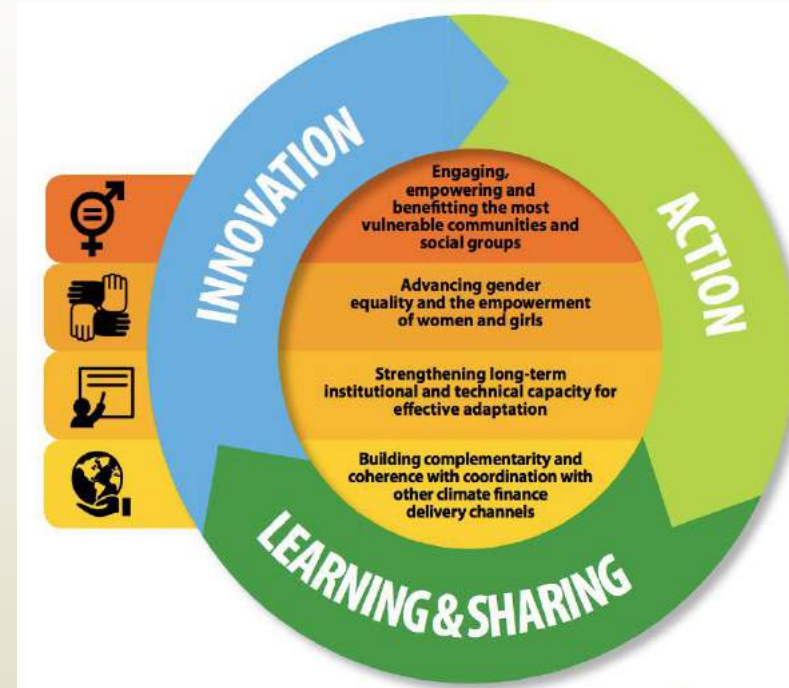
24 de octubre de 2023
RedLAC Congress
Cusco, Peru

Cristina Dengel
Oficial Gestion de Conocimiento y Aprendizaje



Knowledge management in the Adaptation Fund

- KM Strategy and Action Plan, 2017, currently under implementation
- KM Strategy currently being updated
- Medium-Term Strategy 2023-2027 (second strategy)
- Inclusion of a dedicated pillar for Learning & Sharing
- Financing window: learning grants: US\$150k (available to NIEs)



Importance of KM in AF projects/programs

- ▶ **KM is critical in AF projects for two reasons:**
 - Projects/programs are relatively new
 - The AF is piloting Direct Access to countries
- ▶ **Systematic tracking** of experiences and lessons learned gained
- ▶ **Periodic analysis** of these to:
 - enrich global knowledge on climate change adaptation
 - to increase understanding about what interventions work

KM in AF Project/Program Proposals

- **Embedded in AF funded projects/programs** since inception of its operations
- Puts emphasis on the importance of capturing and disseminating lessons learned
- **Mandatory** learning and KM component (Part II: Project/Program Justification, section G)
 - Concept stage (basic level)
 - Fully developed proposal (in detail)
- Grouped in a single component or inserted throughout the project components

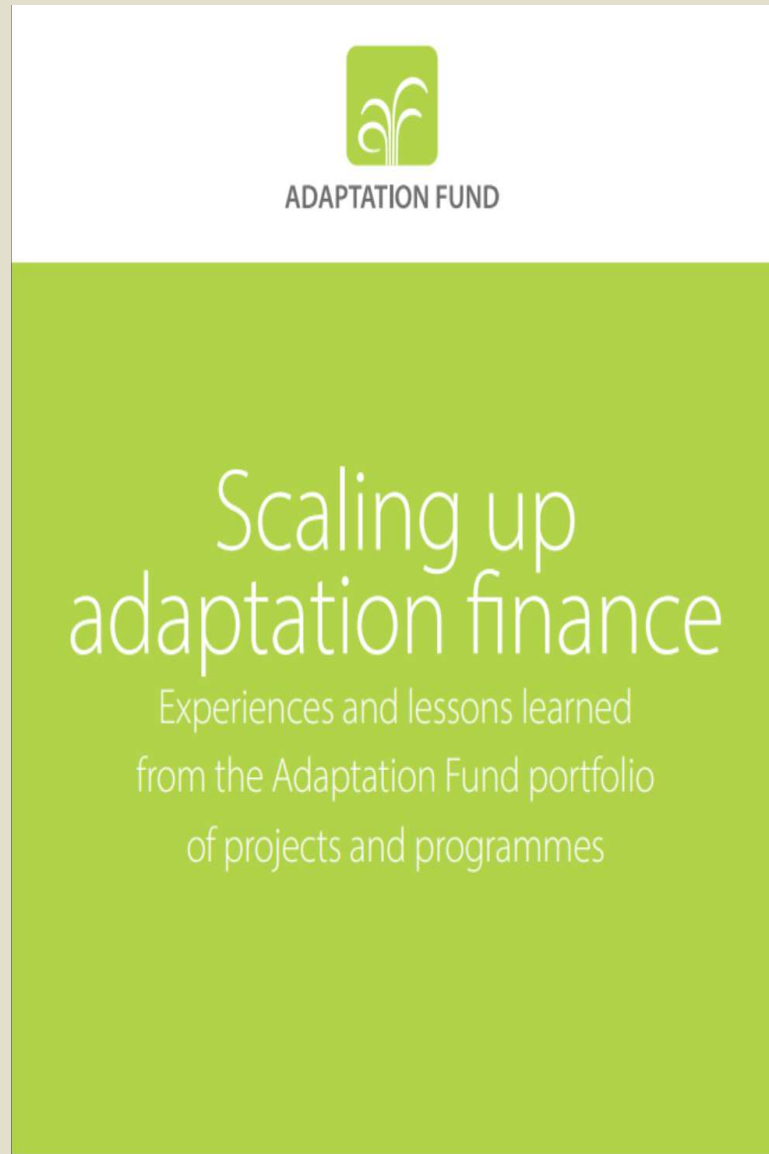
Knowledge sharing tools for dissemination and sharing

- Lessons learned studies/reports (thematic/sectoral)
 - Lessons learned around food security
 - Lessons learned on locally-led actions
 - Lessons learned on scalability or replicability
 - Lessons learned on transboundary adaptation
- Virtual courses (self-paced/free of charge):
 - Courses to increase access to climate adaptation finance
 - Project scale-up
 - Learning grants
 - Innovation
 - Courses on Direct Access (accreditation and incorporation of environmental/social and gender policies in project design and implementation)

Knowledge events

- ▶ **Knowledge events & international conferences (COPs, Adaptation Futures, Community-based adaptation, etc.)**
 - ▶ To facilitate interchange of experiences and learning with other stakeholders and/or other climate funds
 - ▶ Organized/hosted by AF or in collaboration with other climate funds
 - ▶ AF provides information that is useful to other entities, including in their decision-making whether to scale up a project or particular intervention
 - ▶ Content extracted from projects/programs financed by the AF
 - ▶ Ex: COP27 in Sharm el-Sheik, event organized in collaboration with GCF on scalability and replicability of adaptation interventions





- Objective: the study aims to understand the enabling conditions, best practices and challenges to the scaling-up of adaptation interventions; to increase awareness in countries and the wider adaptation community about scaling-up
- Seeks to generate and share knowledge on incentives and benefits of scaling up successful smaller projects financed by one fund with resources from other entities
- Examined scaled-up projects from Senegal, Maldives, Pakistan, Colombia, Georgia, India and Rwanda (total of 18 AF projects scaled-up to date)
- How to access: <https://www.adaptation-fund.org/document/scaling-up-adaptation-finance-experiences-and-lessons-learned-from-the-adaptation-fund-portfolio-of-projects-and-programmes/>
-

Community of Practice for Direct Access Entities (CPDAE)



- ❖ Plan de Acción
- ❖ Presidente e vice-presidente del comité

Thank you!



www.adaptation-fund.org/
@adaptationfund

